

SAP – Praktikum 1

Introduction + Navigation

anton@ukdw.ac.id

Outline

- Introduction + Navigation (1) **anton**
- Systemwide Concepts (1) **yuan**
- Logistics (2) **mahas**
 - Procurement
 - Sales Order
 - Production
- Human Resources (1) **anton**
- Financials (2) **yuan + anton**
 - Accounting Foundation
 - Financial Accounting
 - Management Accounting
- mySAP Technology (1) **anton**
 - Client Server Architecture
 - The Database
- TES SAP (1) **mahas**

Point Penilaian

- 30 point dari:
 - Tugas Praktikum
 - Capture semua exercise yang ada atas nama user anda!
 - Tes SAP
 - 70% benar, LULUS!

SAP History

- 1972: 5 org pegawai IBM -> SAP (System Analysis and Program Development)
 - Dari Jerman
 - Untuk mengembangkan standard aplikasi untuk real-time business
- 1973: Financial Accounting complete -> R/I System
- 1974: Dipamerkan -> dpt 40 perusahaan
- 1976: SAP (System Application and Products in Data Processing) -> SAP GmbH
- 1977: SAP berkembang keluar jerman
 - Untuk sales n distribution

SAP History

- 1979: SAP menggunakan server Siemens 7738
- 1982: ultah yg ke 10
- 1988: SAP GmH berubah menjadi SAP AG
- 1991: SAP mengeluarkan versi R/3
- 1997: SAP ultah ke 25
- 1999: mysap.com -> berbasis web
- 2003: mySAP business suite
- 2004: sudah menggunakan enterprise service architectures
- Karyawan SAP -> 30rb orang
- Web resmi: www.sap.com

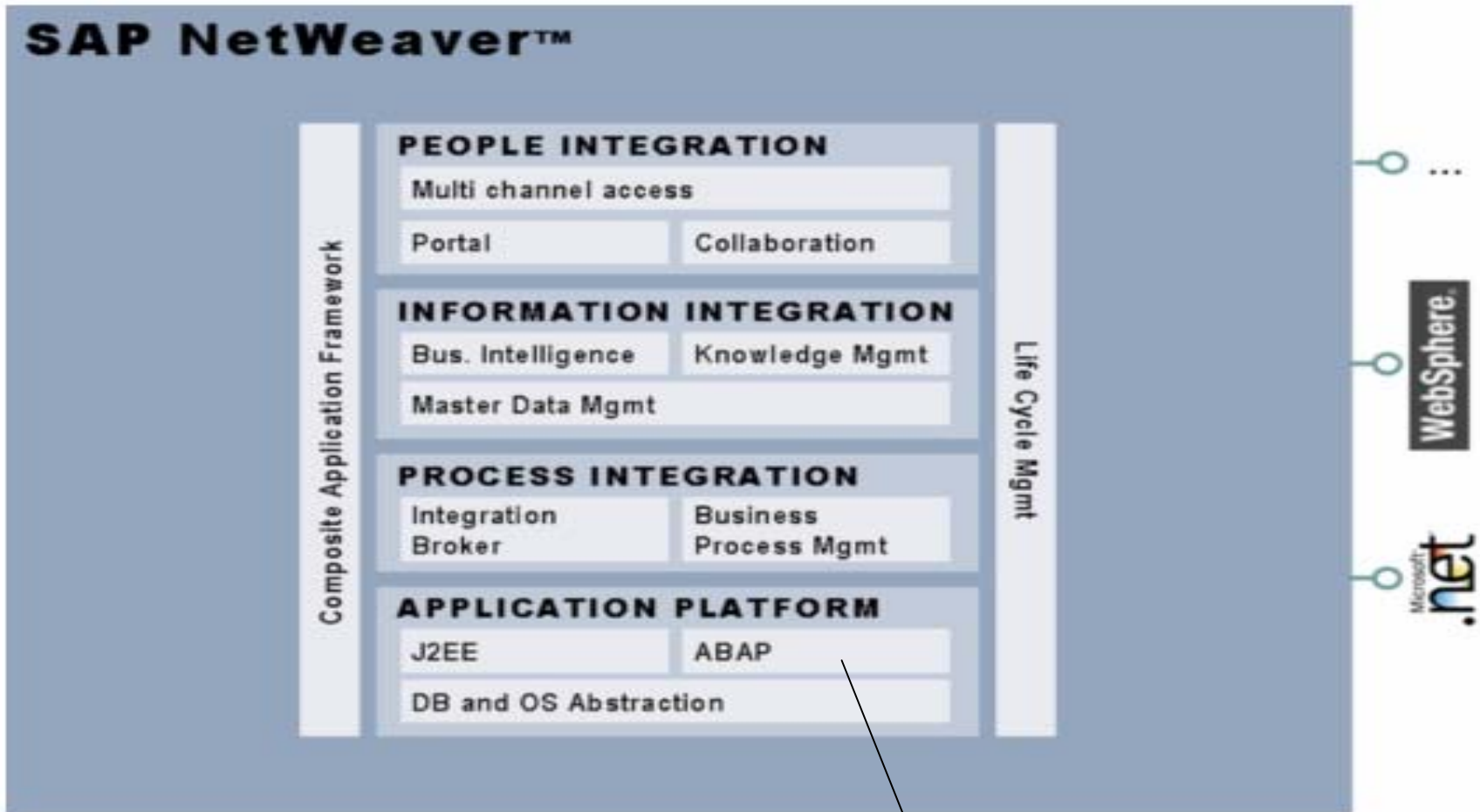
ERP

- ERP muncul tahun 1980an
- ERP berbasis web: 1990an
- Integrated Business Suite & Application: 2000an
 - SAP NetWeaver
 - mySAP ERP

Teknologi: SAPNetWeaver

- People integration
 - Human Resources Management
- Information integration
 - All data relevant to companies
- Process integration
 - All processes that run across system in heterogeneous platform

Teknologi: SAP Netweaver



SAP Web Application Server

mySAP ERP

- Bagian dari SAP NetWeaver
- Bagian yang bisa diimplementasikan ke client
- Inti dari produk SAP
 - mySAP ERP Financial
 - mySAP ERP Human Capital Management

Produkt-produk SAP

- **mySAP Business Suite**: large company
 - Complete
- **mySAP All in One**: average company
 - Precofigure functionality
- **SAP Business one**: small company
 - Fundamental function
 - Core Fungsional: SAP myERP
 - HR, dan FI

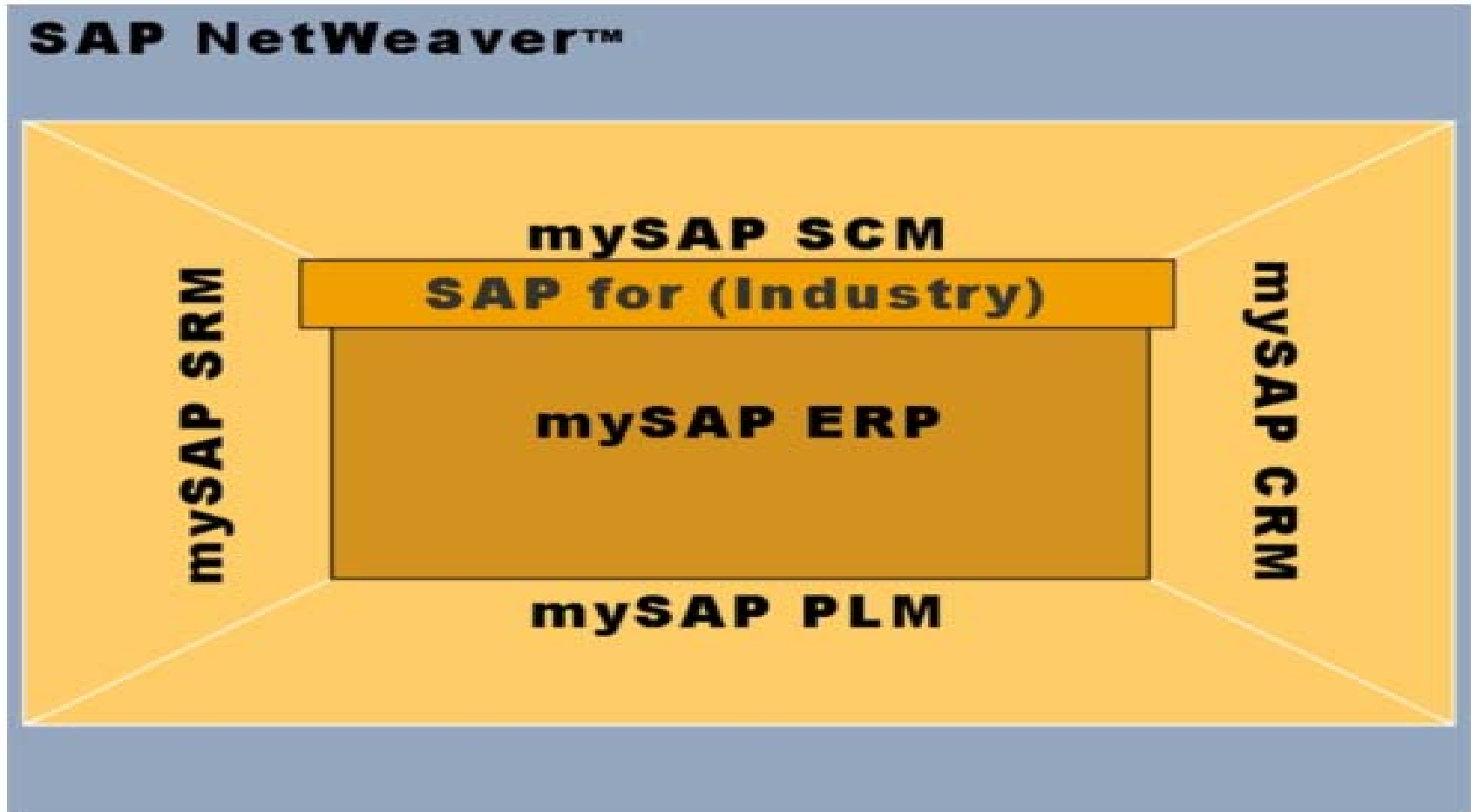
mySAP Business Suite

- Core function, plus
 - CRM,
 - product life cycle management,
 - Development, quality, dan maintenance
 - supply chain management,
 - Coordination of raw material, information, and financial
 - supplier relationship management
 - Untuk purchasing

Industry solution for

- Automotive
- Banking
- Chemical
- Healthcare
- Oil & Gas
- Retail

Industry specific - custom

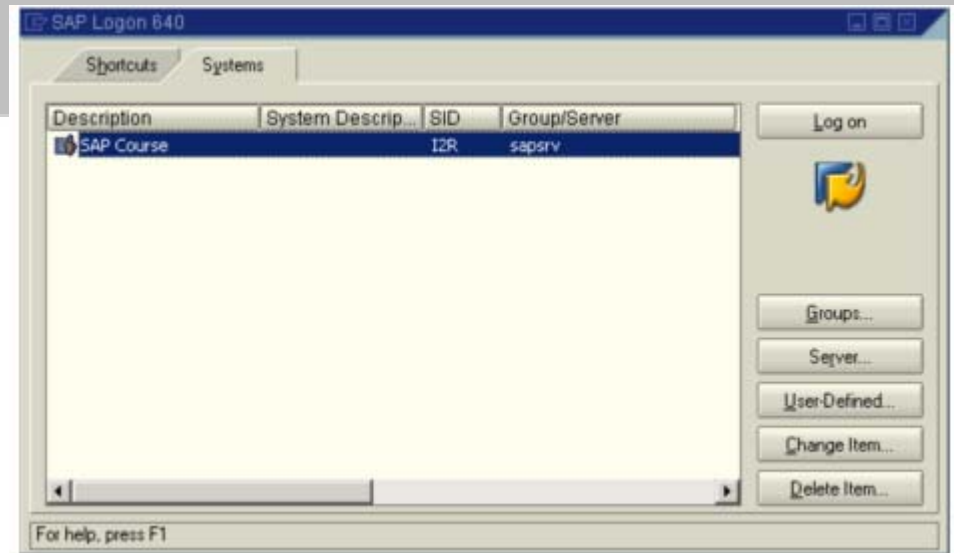


mySAP Business One

- Industry solution
- Core function
- Rapid implementation
- Lower costs

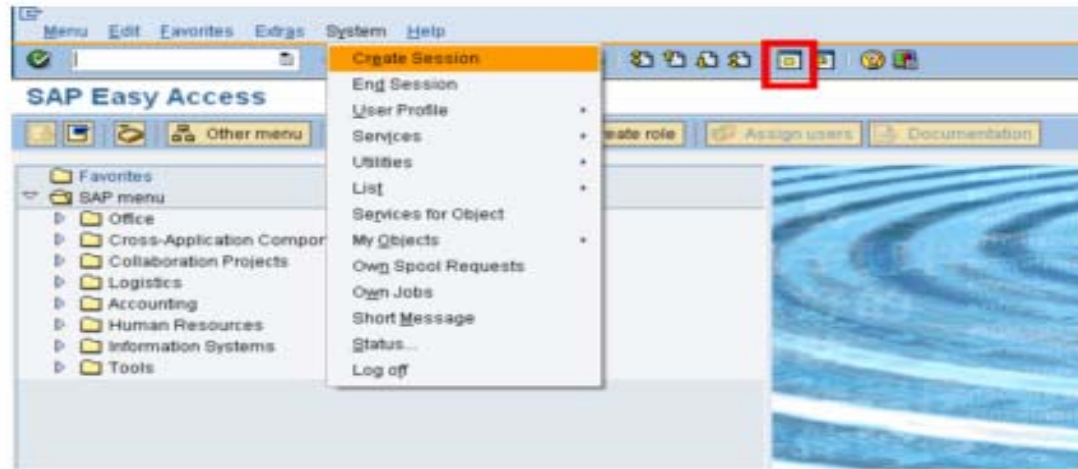
Navigation

- SAP Client
 - SAP GUI (Windows)
 - 700mb
 - SAP GUI (Java)
- SAP Logon
 - Client: 800
 - User:
 - m11-##, m12-##, m13-##
 - Password: 123456 (default)

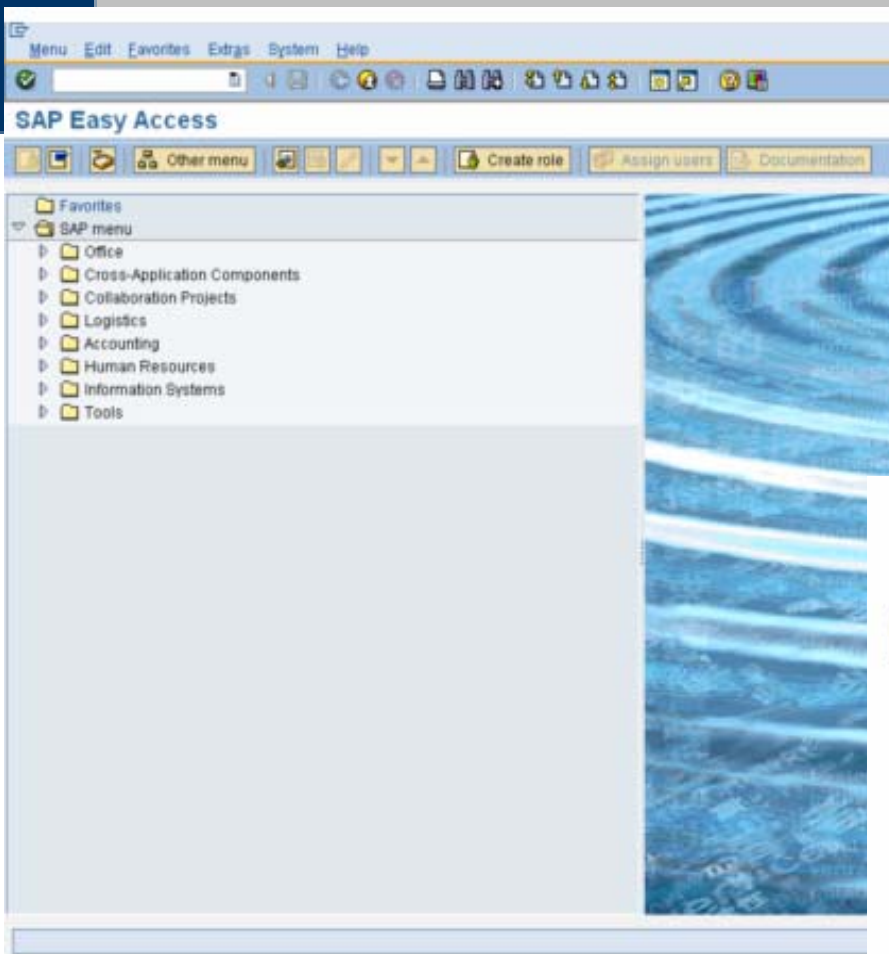


Unit 1/Lesson 1

Multiple Logon

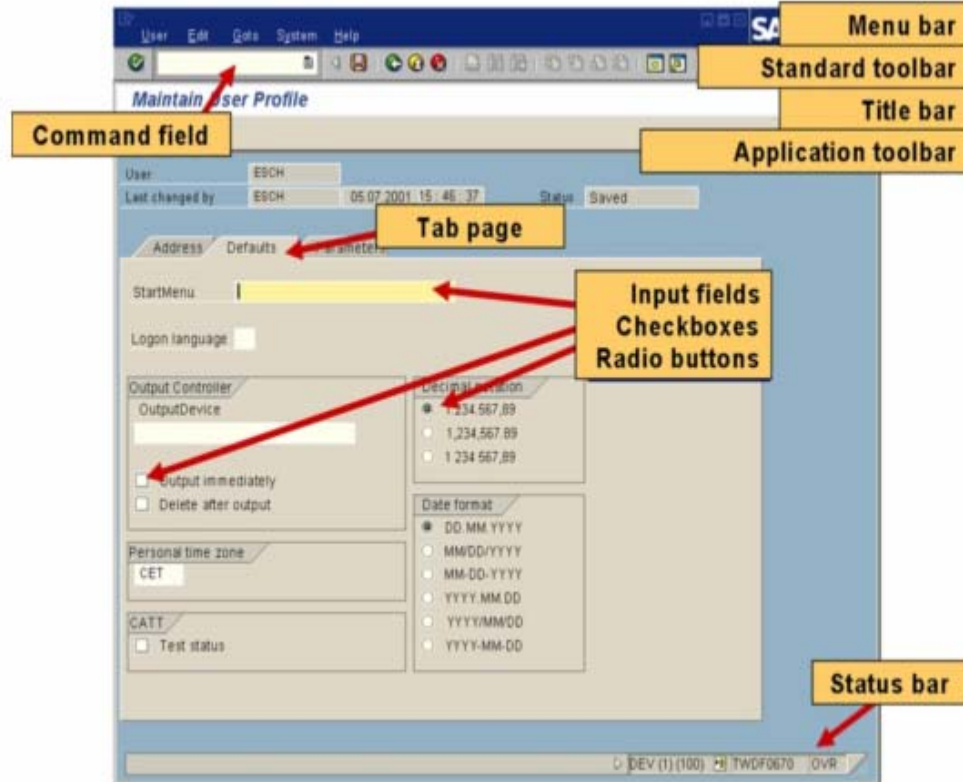


- Continue this logon, end any others logon
- Continue this logon, without ending any other logon
- Terminate this logon



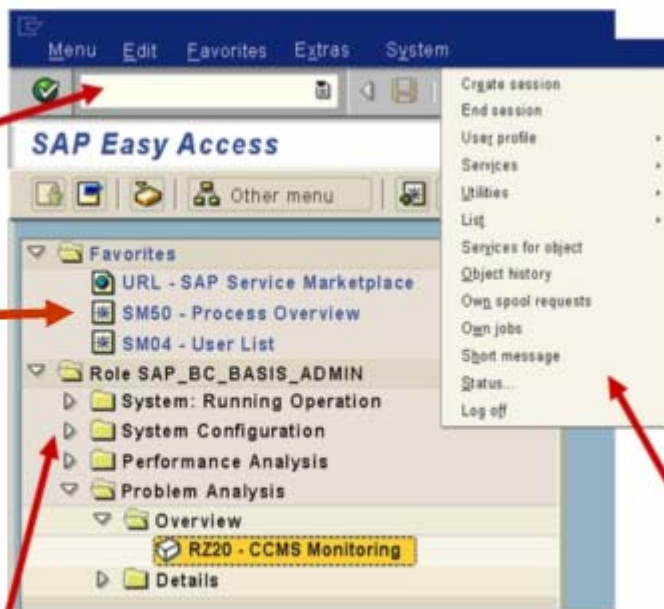
Tampilan utama

Screen Structure



Navigation

- Enter transaction code – T-CODE
- Choose item menu from menu bar
- Choose item menu from favorites
- Choose item menu from role based user menu

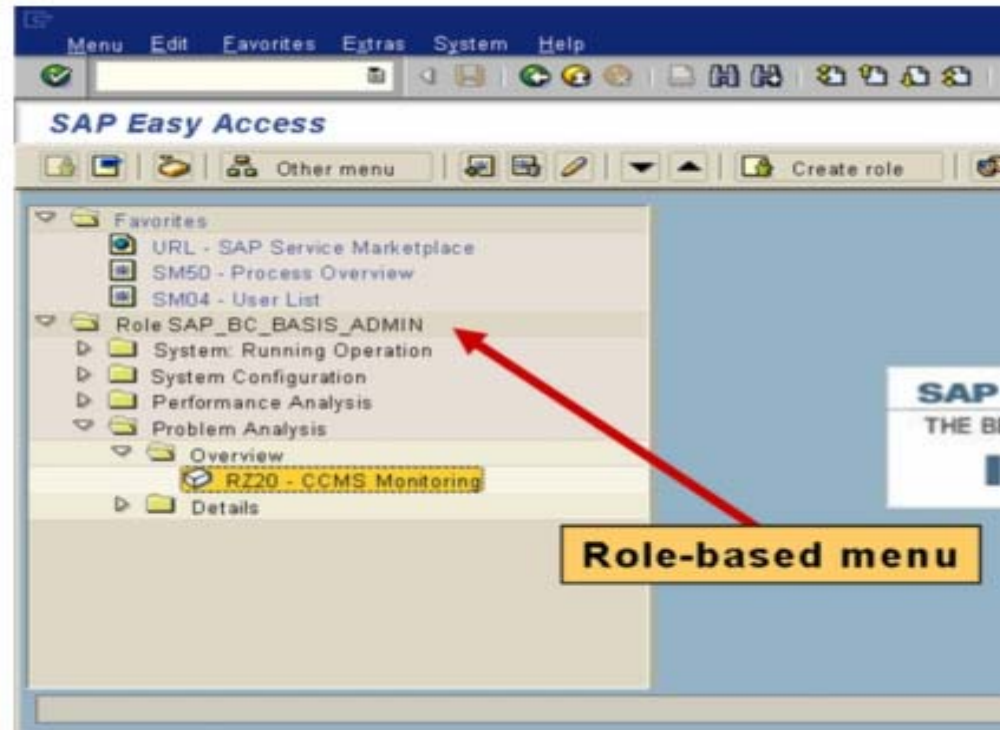


Command field

Favorite List

SAP Easy Access and favorites list

Menu



Role-based menu

Using T-CODE

- /n cancel current transaction
- /nXXX cancel current transaction and go to specific T-CODE
- /o display session overview
- /oXXX initial specific transaction in new session
- /nend end current session with confirmation
- /nex end current session without confirmation
- /i delete current transaction

Favorite & Status Bar

- Fav:
 - Transaction
 - Link to files
 - Internet address
- Status bar:
 - Left side: error message & another system message
 - Right side: system, client, user, program, transaction, response time

Using help

- Help features:
 - Application help: offline help
 - SAP library: online help
 - Glossary: find a definition
 - SAPNet: online web based help
- F1 help:
 - Display technical information
- F4 help:
 - Possible valid values

F1 help

Output Controller
OutputDevice

 Output immediately
 Delete after output

Personal time zone
CET

CATT
 Test status

Technical information

F1 help

Field Help

Performance Assistant

Print parameter 2

Indicates whether spool requests are printed immediately.

Select this field to print your spool requests immediately.

Leave the field blank to retain spool requests in the spool system until they are released. To release these spool requests for printing, you can use *System -> Services -> Output controller*.

F4 help



F4 help

Possible Entries

A screenshot of the SAP 'Language (2) 38 Entries found' window. The window title is 'Language (2) 38 Entries found'. The table below shows the list of languages and their corresponding language codes.

Langu...	Language
AF	Afrikaans
AR	Arabic
BG	Bulgarian
CS	Czech
DA	Danish
DE	German
EL	Greek
EN	English
ES	Spanish
ET	Estonian
FI	Finnish
FR	French
HE	Hebrew
HR	Croatian
HU	Hungarian
ID	Indonesian

NEXT

- Kerjakan semua latihan 2!